

27D Wymet Gardens, Dalkeith



Fixed Price £189,995

Postcode: EH22 1FL

Bedrooms: 2

Council Tax: Band C



Immaculate, comfortable, modern two-bedroom home in move-in condition

This beautiful, fresh, bright flat is a relaxing haven from the world. In almost showhome condition, the property is set in a modern development at Millerhill on Edinburgh's outskirts, with Shawfair Railway Station only a few minutes' walk away. The large, dual aspect, L-shaped dining lounge provides a superb space in which to eat, relax and entertain, while benefiting from both bright mornings and afternoons. It's ideal for any single person, young couple or possibly someone looking to downsize while retaining the comforts to which they are accustomed.

www.mattac.legal |



mattac
positive law practice

espc

Mattac | 93 George Street, Edinburgh EH2 3ES | Tel: 0131 510 8740 | Fax: 0131 510 8750 | info@mattac.legal

No warranties are made regarding the working order of appliances or systems. These particulars are not contractually binding and statements or plans are not warranted. Dimensions are approximate. Interested parties are advised to note interest with Mattac as soon as possible and in the event of a closing date the seller shall not be bound to accept the highest or any offer. Offering Solicitors are advised to use the Scottish Standard Clauses (SSC). Any Offer which does not use the SSC may be responded to by deletion of the non-standard clauses and replacement with the SSC.

27D Wymet Gardens, Dalkeith



While the dining lounge is the focus of this home, with its space for a full-size dining table; any size of couch someone might want; and anything up to a home cinema-sized television, the other rooms are no less comfortable and cozy. The modern, fitted kitchen contains built-in appliances including, a washing machine, dishwasher and, importantly for the keener chef, a gas-fired hob and electric oven. Both good-sized bedrooms contain telephone and television points for complete convenience.

The property is only around four-years old and has been very well cared for throughout its time so far. The pleasing, neutral décor seen throughout the flat is immaculate, giving a property that is truly in move-in condition. It even comes with an allocated parking space!

Outside, there is a pleasing view of the modern square on which the flat sits, where a pleasant, contemporary sculpture serves as a focal point. It's an ideal space for sitting with a picnic, a good book or perhaps both on a sunny, summer afternoon.

The Edinburgh City Bypass is a short distance away, giving easy access to the whole of the city; or southwards to the Borders or England by the A1, A7 or A68. The convenience of the stores at Newcraighall's Fort Kinnaird, along with its restaurants and cinema, are only a few minutes' drive away. For those who are serious about their sports or gym-going, the new David Lloyd facility at Shawfair is expected to open soon. Trains from Shawfair can take someone to Edinburgh Waverley in as little as fourteen minutes.

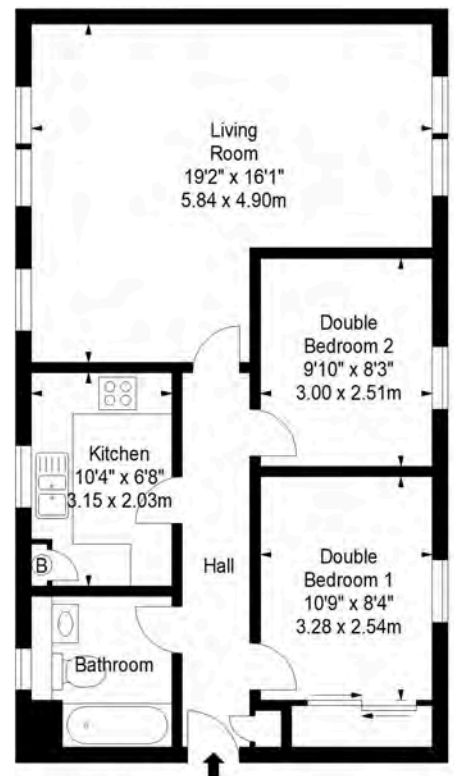


www.mattac.legal |





27D Wymet Gardens, Dalkeith



Features

Gas central heating and double-glazing. Fully carpeted. White goods and window coverings are included.

Viewing

Viewing is by appointment with the selling agents. A video tour is available online.